

See The Light Shawl

I designed this shawl, which I named the "See The Light Shawl", in remembrance of my mother-in-law. She passed away peacefully on the 19th of December, 2010, at the age of 89.

The shawl begins at the center top starting with my mother-in-law's favourite knitting pattern, the Feather & Fan. From there open out rays, sun rays, and, further down, cornflowers. The edging comes in two versions. I started knitting this colourful shawl with the wool I spun on my handspindle during the week my mother-in-law made her way to the other side. The first is pink and green. The second is cornflower blue. A cornflower is painted on her urn, and she would have picked that flower if she had seen it next to a path. In the photographs, the colours don't resemble the way they really look in the light that is outside right now.

The pattern will be free, as all of my patterns, but I hope for donations for eye surgeries for people in developing countries. That is why I named the shawl the "See The Light Shawl". My mother-in-law had cataract surgery performed on both of her eyes, and she was happy to see colours again. On her 80th birthday, she asked for donations to pay for eye surgeries for other people so that they, too, could see the light and the colours again. To honor her we asked for the same instead of flowers for her funeral.

It costs only 30 € or \$40 to do cataract surgery on an eye in Bangladesh. If some knitters who knit this shawl donate a small amount of money, many other people will see the light again. Click here to see how you can donate by credit card to "Christoffel Blindenmission", CBM, which has already done more than 10,138,000 eye surgeries and on average does one every minute. Here you can read how to donate: <http://beyenburgerin.files.wordpress.com/2011/02/donations-to-cbm.pdf>

Finished Sizes:

Pink-green shawl, short version, small needles: 150 x 75 cm, 60" x 30".

Darker blue shawl, long version, small needles: 150 x 75 cm, 60" x 30" .

Lighter blue shawl, short version, big needles: 180 x 90 cm, 70" x 35" .



Materials:

Pink-green shawl, short version: 100 grams and 500 metres (547 yds), 5.5 mm (US 9) needles, 207 beads.

Darker blue shawl, long version: 100 grams and 600 metres (656 yds) of lace yarn, 4.5 mm (US 7) needles, 279 beads.

Lighter blue shawl, short version: 200 grams of cashmere, 700 metres (766 yds), 7 mm (US 10.5) needles, 207 beads.

Note: You should buy extra beads because they are not all perfectly-shaped or their holes might be too small.

Small hook for beading, tapestry needle, markers

Gauge: 10 x 10 cm (4" x 4") (stockinette, after blocking)

Darker blue shawl: 19 stitches x 26 rows

Pink-green shawl: 15 stitches x 24 rows

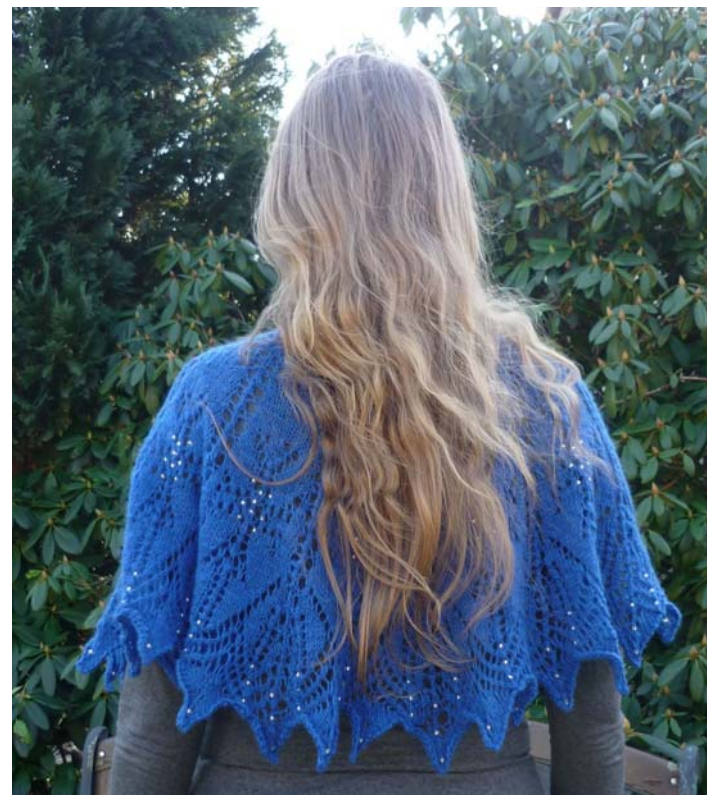
Lighter blue shawl: 12 stitches x 17 rows

The shawl starts with 4 sections in Chart 1 and is then split up into 12 sections beginning with Chart 2.

Please read the instructions carefully before beginning the shawl. They contain special that you should know.

How to do the beading: At a ▲ stitch, a bead is placed onto the stitch after knitting it; at a □ knit stitch before knitting it.

Important: The last stitch of a repeat on the left side of the chart, often ▲ or I , is also the first stitch of the next section. You have four sections in the first chart, each framed by a knit stitch. So there are five of these edge stitches in total, the single knit stitches in Setup Row B. The yarnovers in Setup Row B divide the four sections. Place a marker after every section/repeat.



Instructions:

Note: The shawl is divided into four sections, together approximately making a semicircle. You will knit it from the top middle (neck) down to the sides.

Setup for the shawl:

Cast on 3 sts any way you like. Knit 10 rows.

Setup Row A: k3, pick up one stitch from every ridge to the side (5 stitches), k3 of the cast on (= 11 stitches).

Setup Row B: K3, k, yo, k, yo, k, yo, k, yo, k, k3 (= 15 stitches).

Setup Row C: K3, p9, k3.

From here on, every even-numbered row is knit as follows: k3, p until 3 sts before the end of the row, k3. Exception: **○ ○**. If there are two yarnovers in a right-side row, p and ptbl them in the following wrong-side row.

The 3 edge stitches on each side are knit in every row and are not shown in the chart.

Start to knit Chart 1 after the Setup Rows, through Row 55/56.

In Row 57, the pattern splits up into twelve sections/repeats. Continue with Chart 2 and Row 57. In Chart 2, Rows 53 and 55 are only repeated from the previous chart as a reference to orient you.

Continue with Chart 3 through Row 95. In Chart 3, Row 67 is only repeated from the previous chart as a reference to orient you. **Important:** It is correct that there is one more increase/yarnover in Row 65 than the number of decreases. The next pattern needs the odd number of stitches.

Continue with Chart 4 and Row 97. In Chart 4, Row 95 is only repeated from the previous chart as a reference to orient you. As the pattern gets wider, it is split into left and right sections. The middle stitch is shown in both charts; please knit it only once.

If you want to knit the shorter-edged version, bind off after Row 116 using the Knotty Bind Off described below.

If you want to do the longer-edged version, **continue with Chart 5 after Row 113**. Chart 5 is only knit in the longer-edged version!!!!



The pattern splits into left and right sections again. The middle stitch is shown in both charts; please knit it only once. The ■ squares (dummy=wildcard/placeholder) are not knit. There are more stitches in the subsequent rows because of the earlier yarnover increases.

Bind off:

Knotty Bind-Off Pattern: * k2tog, place thread in front of the left needle, slip the ktog stitch back onto the left needle with the thread still in front, place thread behind the left needle*.

Finishing: Soak for at least half an hour, press excess water out smoothly and then block, pinning each peak. Weave in ends.

Symbols:

▲ s2, k1, pss0

▴ ssk

▾ k2tog

I, □ k stitch

○ yo

V k, ktbl = 2 stitches (one increase)

■ no stitch

○ ○ If there are two yarnovers in the right-side row, p and ptbl in the following wrong-side row.

Beads: The yellow bead symbol pertains/belongs to both the short **and** long versions of the shawl; the green bead symbol pertains **only** to the short version.



